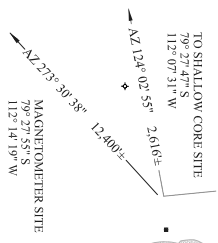


SKIWAY APPROACH MARKERS



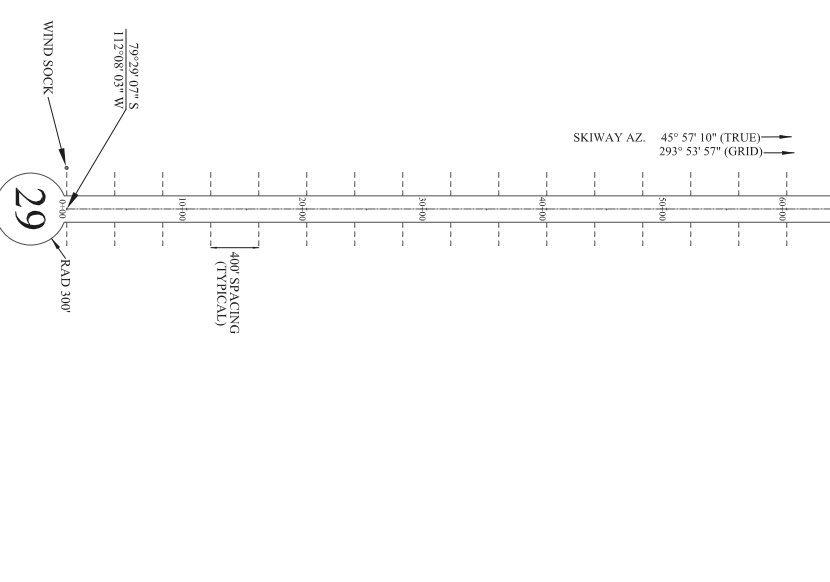
WAIS CAMP SITE PLAN

2006 - 2007

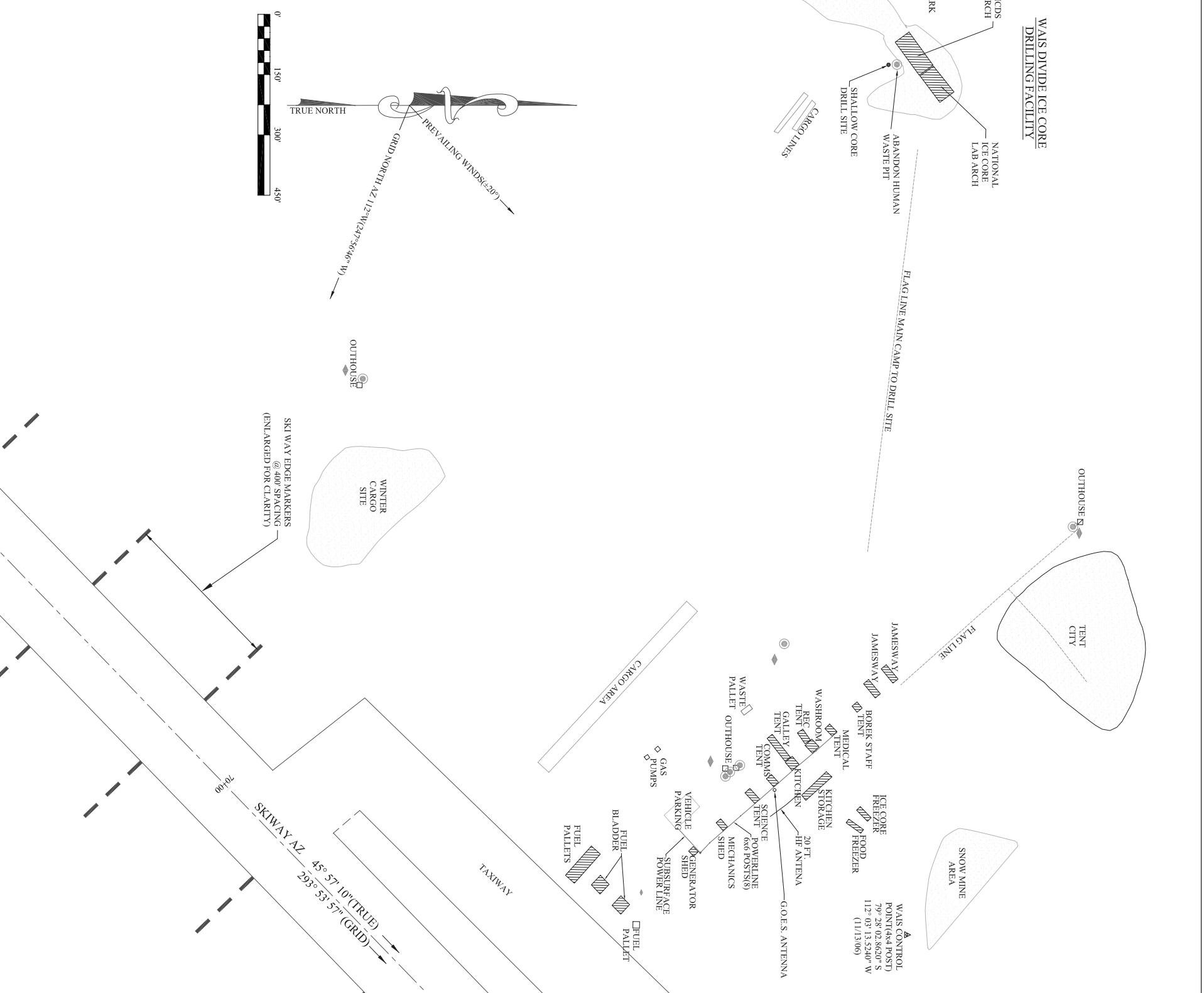
NOTES:

- 1.) BASIS OF BEARING: WAIS CONTROL POINT 4x4 POST
COORDINATES FROM GPS POINT SOLUTION
LATITUDE: 79° 28' 02.8620"
LONGITUDE: 112° 03' 13.5240"
NORTHING: 1177658.221
EASTING: 473497.632
DATUM: ITRF05
PROJECTION: UTM ZONE 12 SOUTH
- 2.) SURVEY BENCHMARK IS 4x4 POST PAINTED WHITE USED FOR CONSTRUCTION OF DRILL RIG BUILDING
- 3.) ACCURACY OF MAP ±2FT. (AS PER GPS MEASUREMENTS)
- 4.) DATE OF SURVEY NOVEMBER 13-15, 2006
- 5.) SURVEY IS JOINT EFFORT BY UNAVCO TECHNICAL GPS GROUP AND RPSC SURVEY DEPARTMENT
- 6.) VISIBILITY MARKERS ARE CONSTRUCTED OF 4x4 PLYWOOD SHEETS ON 4" x 4" X 12' WOOD POSTS
- 7.) ● ABANDONED HUMAN WASTE PIT
◆ URINAL FLAG

SKIWAY EDGE MARKER LAYOUT



8 7 6 5 4 3 2 1



NATIONAL SCIENCE FOUNDATION
OFFICE OF POLAR PROGRAMS
WASHINGTON, D.C. NSF
CONTRACT OPP. 0000373

REVISION APPROVAL RECORD					
DISCIPLINE	REVIEWED BY	DATE	DISCIPLINE	REVIEWED BY	DATE
CIVIL			CONSTRUCTION		
ARCHITECTURAL			EH&S		
STRUCTURAL			QUALITY ASSUR.		
MECHANICAL			SCIENCE		
ELECTRICAL			OPERATIONS		
I.T.					
FIRE PROTECT.					

West Antarctic Ice Shelf
WAIS CAMP 2006-07

Raytheon Polar Services

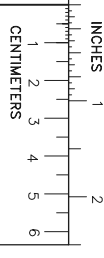
SITE PLAN
DATE CREATED: 11/30/06
DESIGNED BY: JCS
DRAWN BY: JM / JCS

PROJ. #
Wais Camp Site Plan

SCALE: 1"=150'

SHEET ORDER
1

SHEET NAME



A B C D